



Chettinad

Dental College & Research Institute



Department of
CONSERVATIVE DENTISTRY

DIRECT COMPOSITE RESTORATION



PRE-OPERATIVE



TOOTH PREPARATION



POST OPERATIVE

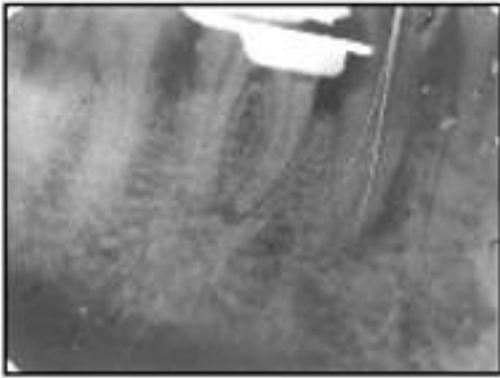
HEMISECTION



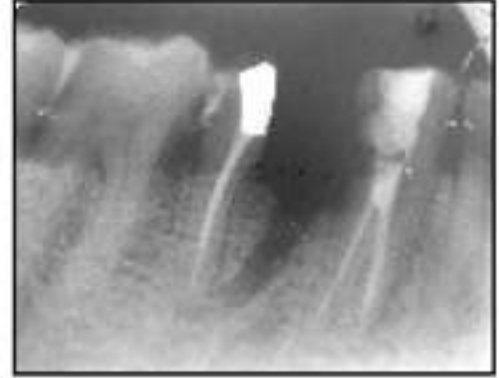
RC TREATED 35 & 36



MESIAL ROOT HEMISECTED



PRE-OPERATIVE 36



MESIAL ROOT HEMISECTED



POST ENDODONTIC RESTORATION



IN OCCLUSION



3 MONTHS POST-OP



9 MONTHS POST-OP



ONE & HALF YEAR POST-OP

INDIRECT CAST RESTORATION

INLAY IN 26



TOOTH PREPARATION



INLAY LUTED IN 26 USING TPYE I GIC

MANAGEMENT OF EXTERNAL ROOT RESORPTION



PERIODONTAL POCKET IN 16



FLAP ELEVATION



RESORPTIVE LESION CURRETED



RESORTION SEALED WITH MTA



HA BONE GRAFT PLACED



SUTURE PLACEMENT



PRE-OP RADIOGRAPH



POST-OP RADIOGRAPH

MANAGEMENT OF MID-ROOT FRACTURE



PRE-OPERATIVE



PRE-OP RADIOGRAPH



MTA APICAL PLUG



OBTURATION



6 MONTH POST OPERATIVE



TOOTH PREPARATION



DIRECT COMPOSITE RESTORATION

NON-SURGICAL MANAGEMENT OF PERIAPICAL LSEION

CHRONIC PERIAPICAL ABSCESS WITH INTRA ORAL SINUS IN 21:



PRE-OPERATIVE

WORKING LENGTH

CaOH ICM



AFTER 4 MOS



POST-OP

PERIAPICAL SURGERY

SURGICAL PROCEDURE:



FLAP ELEVATION



CYST WALL LOCATED



CYST ENUCLEATED

RADIOGRAPHS:



PRE-OPERATIVE



POST OPERATIVE



ONE MONTH REVIEW



SIX MONTH REVIEW

POSTERIOR SURGERY



PERIAPICAL LESION IN 26



FLAP ELEVATION : LESION IN RELATION TO MESIO-BUCCAL ROOT



LESION CURETTED & APICAL RESSECTION IN MB ROOT



SUTURE PLACEMENT



PRE-OP RADIOGRAPH



POST-OP RADIOGRAPH

CAST POST AND CORE



PRE-OPERATIVE



WAX PATTERN

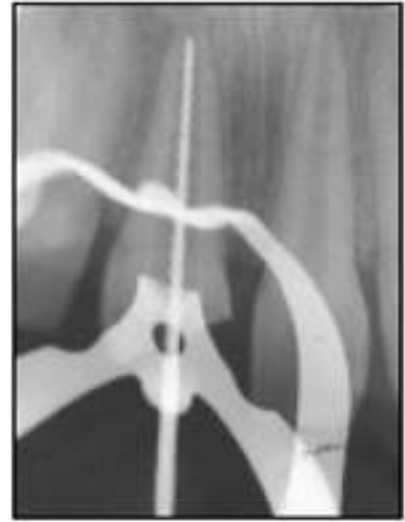


POST CEMENTED WITH GIC

SINGLE STEP APEXIFICATION



PRE-OPERATIVE



WORKING LENGTH



MTA PLACED
APICAL 1/3rd



CUSTOM-MADE
MASTER CONE



OBTURATION



6 MONTHS REVIEW



SINGLE STEP APEXIFICATION



PRE-OPERATIVE



WORKING LENGTH



MTA PLACED
APICAL 1/3rd



CUSTOM-MADE
MASTER CONE



OBTURATION



6 MONTHS REVIEW

MANAGEMENT OF AVULSED TOOTH

PROCEDURE:



AVULSED TOOTH-21



CLINICAL VIEW



EXTRA ORAL RC TREATED



REPOSITIONING



AFTER SPLINTING



AVULSED TOOTH-21



POST OBTURATION & SPLINTING

BLEACHING OF FLUORESED TEETH



PRE-OPERATIVE



TRAY PREPARATION



POST OPERATIVE

MANAGEMENT OF MIDLINE DIESTEMA USING DIRECT COMPOSITE RESTORATION

PRE-OPERATIVE



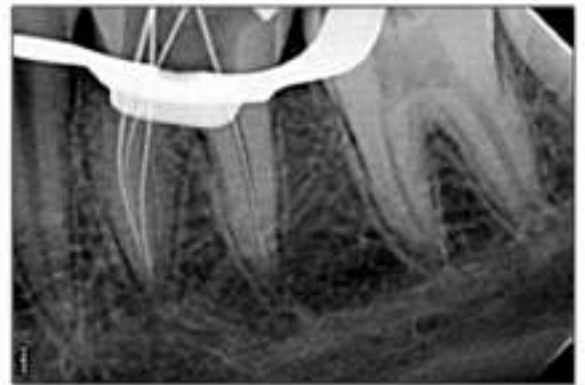
POST OPERATIVE



MANAGEMENT OF INDEPENDENT (TYPE VIII) MIDDLE MESIAL CANALS IN MANDIBULAR FIRST MOLAR



PRE-OPERATIVE



WORKING LENGTH



CLINICAL VIEW



OBTURATION

Pre treatment



Metapex obturation



Apical barrier formation seen in 11



Gutta percha obturation in 11

MANAGEMENT OF RADIX ENTOMOLARIS IN
MANDIBULAR FIRST MOLAR



OPG



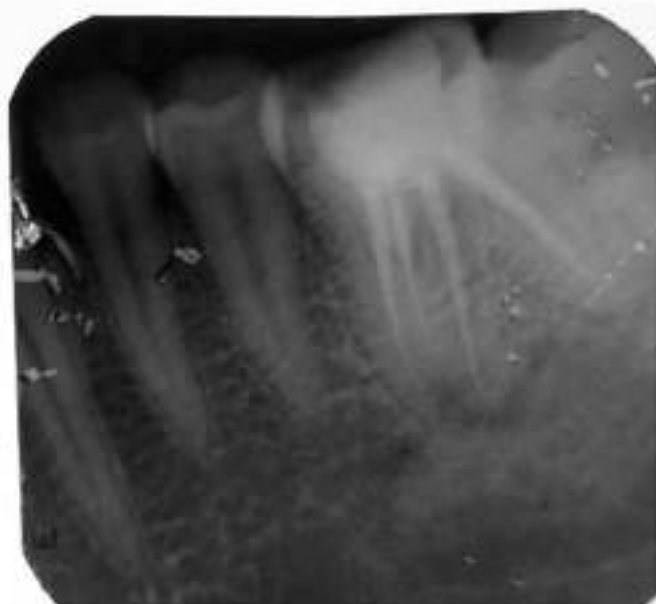
PRE-OPERATIVE



WORKING LENGTH



CLINICAL VIEW



OBTURATION

SINGLE STEP APEXIFICATION USING MTA



PRE-OPERATIVE



WORKING LENGTH



MTA PLACED
APICAL 1/3rd



OBTURATION

TWO PALATAL CANAL IN A MAXILLARY FIRST MOLAR DIAGNOSED WITH SPIRAL CT



Fig : 1



Fig : 2



Fig : 3



Fig : 4



Fig : 5

Fig-1 Preoperative radiograph, **Fig-2** CT image of maxillary arch, **Fig-3** CT image- coronal, middle, apical region, **Fig-4** Periapical radiograph shows working length – a #15 size k file is evident in the additional palatal canal, **Fig-5** Post operative radiograph shows the endodontically treated maxillary 1st molar with two palatal root

COMPOSITE ONLY



PRE-OPERATIVE - 37



TOOTH PREPARATION



RMGIC LINER



COMPOSITE ONLY ON CAST



COMPOSITE ONLY LUTED IN 37



IN OCCLUSION

DIRECT COMPOSITE RESTORATION



PRE-OPERATIVE



POST OPERATIVE

NON-SURGICAL MANAGEMENT OF PERIAPICAL LSEION



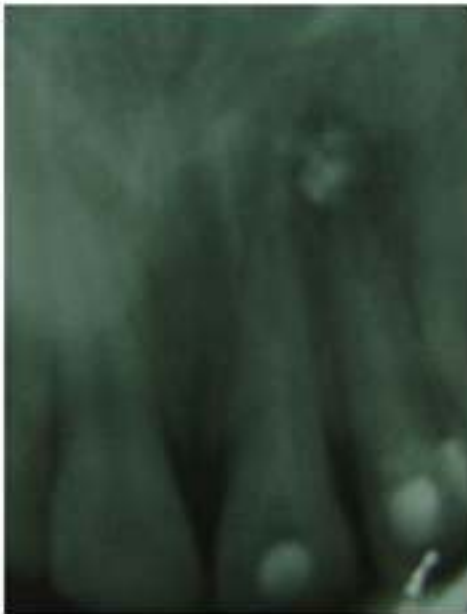
PRE-OPERATIVE



WORKING LENGTH
PLACEMENT



3 MONTHS AFTER CAOH



6 MONTHS AFTER ICM
PLACEMENT



MASTER CONE



POST OPERATIVE

PERIAPICAL SURGERY

SURGICAL PROCEDURE:



INCISION PLACED



FLAP ELEVATED



CYST WALL LOCATED



CYST ENUCLEATED



SUTURES PLACES

RADIOGRAPHS:



PREOPERATIVE



GP REMOVED



WORKING LENGTH



OBTURATION RADIOGRAPH



CYST ENUCLEATED AND ROOT RESECTED